

**CITIZEN PARTICIPATION PLAN
FOR**

NASSAU WORKS MGP SITE

SITE NO. 224019B

**Kent Avenue and Clymer Street
Brooklyn, NY 11249**

Prepared by

National Grid

March 2024

TABLE OF CONTENTS

<u>Section</u>	<u>Title</u>	<u>Page</u>
1.0	INTRODUCTION	1
2.0	BASIC SITE INFORMATION	2
<i>2.1</i>	<i>History and Operations.....</i>	<i>2</i>
<i>2.2</i>	<i>Current Site Description</i>	<i>2</i>
3.0	Remedial Program Overview	4
<i>3.1</i>	<i>Remedial and Supplemental Remedial Investigation Findings.....</i>	<i>4</i>
<i>3.2</i>	<i>Feasibility Study.....</i>	<i>8</i>
<i>3.3</i>	<i>Proposed Remedial Action Plan</i>	<i>8</i>
<i>3.4</i>	<i>Record of Decision.....</i>	<i>8</i>
<i>3.5</i>	<i>Pre-Design Investigation.....</i>	<i>8</i>
4.0	CITIZEN PARTICIPATION ACTIVITIES.....	9
<i>4.1</i>	<i>Goals and Objectives.....</i>	<i>10</i>
<i>4.2</i>	<i>Tools and Methods.....</i>	<i>11</i>
<i>4.2.1</i>	<i>Document Repository.....</i>	<i>12</i>
<i>4.2.2</i>	<i>Meetings and Meeting Fact Sheets.....</i>	<i>12</i>
<i>4.2.3</i>	<i>Information Newsletters.....</i>	<i>13</i>
<i>4.2.4</i>	<i>Telephone Hotline.....</i>	<i>13</i>
<i>4.2.5</i>	<i>Website.....</i>	<i>13</i>
<i>4.3</i>	<i>Roles and Responsibilities.....</i>	<i>13</i>
<i>4.4</i>	<i>Schedule for Implementing Elements of the CPP.....</i>	<i>14</i>
5.0	SUMMARY.....	14

List of Appendices

Glossary of Key Citizen Participation Terms and Major Program Elements	A
Identification of Document Repositories	B
Identification of Affected and/or Interested Parties.	C
Identification of Project Management Contacts	D

1.0 INTRODUCTION

Citizen participation is an integral component of remedial programs in New York State. Input from affected or interested individuals and organizations on the remedial program helps ensure outcomes that account for both technical and human concerns for protecting public health and the environment. A project-specific plan is needed to inform and involve community residents, public and private leaders, and other stakeholders. This Citizen Participation Plan (CPP) documents the planned project-specific public outreach activities and resources organized for the remedial program associated with the Nassau Works MGP Site, a former Manufactured Gas Plant (MGP), including operations of the collocated Wallabout Oil Works, Brewster & Povie Soap Works, former United States government toluol recovery plant, and the Navy Yard.

The primary purpose of this CPP plan is to outline a variety of communication methods that, based on applicable New York State law and New York State Department of Environmental Conservation (NYSDEC) regulations and guidance, provide for constructive communication of program activities between the stakeholders and other interested parties. This CPP includes methods intended to inform interested parties of program developments, elicit responses and public involvement, and provide a central point of contact for inquiries regarding the remedial program for the former Nassau Works MGP Site (“Site”). Given this context, this CPP presents the planned communication and outreach activities, describes how interested individuals and groups can participate in the remedial program, and provides a variety of reference materials to facilitate gaining access to project-specific information and management personnel.

Both the NYSDEC and the Respondents (National Grid and The City of New York) are committed to the implementation of this CPP as required by Environmental Conservation Law 27-1417 and Title 6 of the New York Code of Rules and Regulations (NYCRR) Part 375, applicable NYSDEC guidance (e.g., DER-23/Citizen Participation Handbook for Remedial Programs (January 2010), and the Order on Consent (Index # W2-1090-06-06). As required by 6 NYCRR Part 375-1.10 and 375-3.10, NYSDEC and the Respondents will review and update this CPP to account for significant changes in the remedial program. **While the Respondents have voluntarily assumed responsibility for preparation of this CPP, they reserve all of their rights under federal and state environmental laws to pursue other parties who may have responsibilities at this Site.**

2.0 BASIC SITE INFORMATION

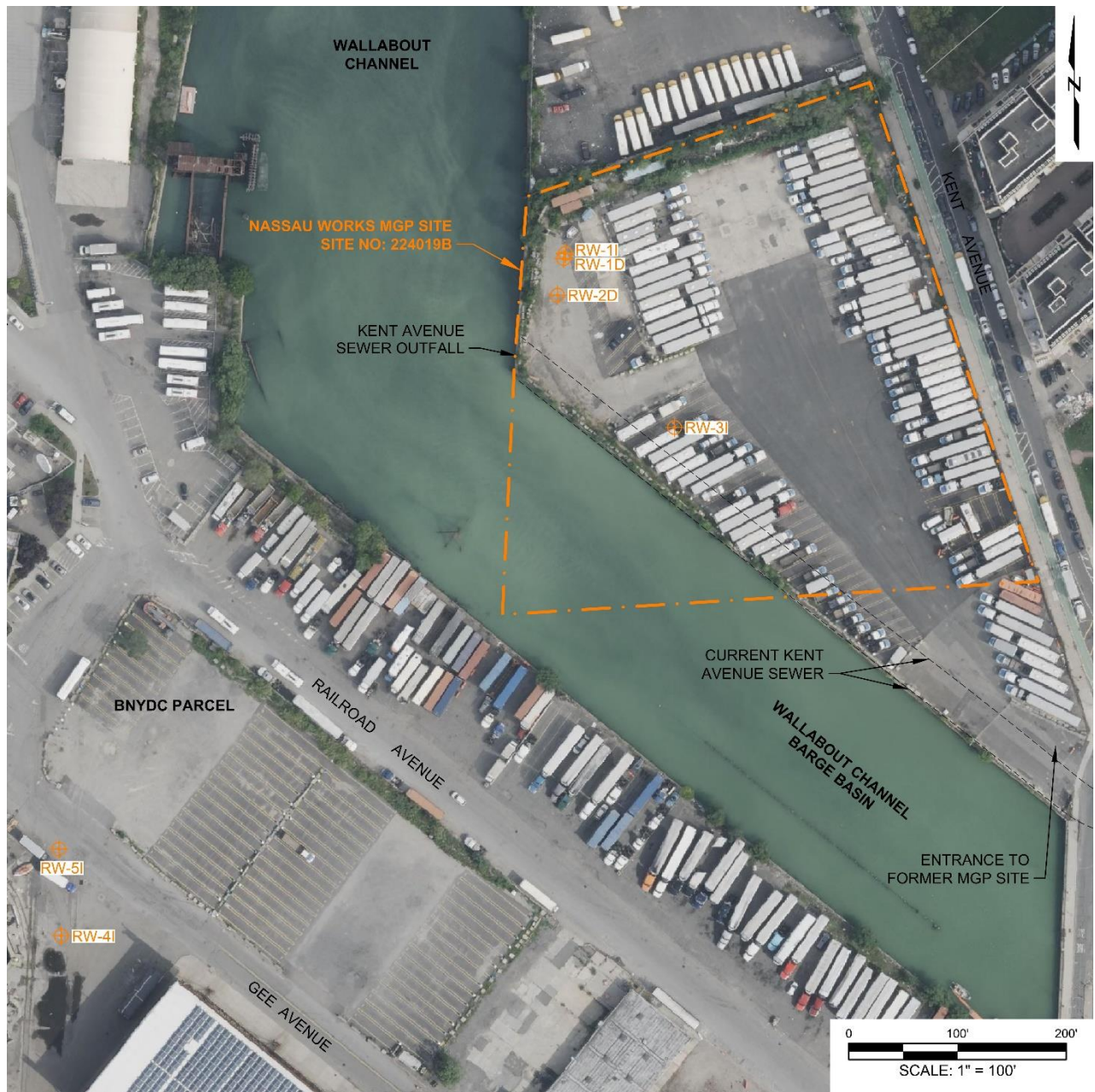
The former Nassau Works MGP property is located in Brooklyn, NY near the current-day intersection of Kent Avenue and Clymer Street within the northeastern corner of the former 260-acre Brooklyn Navy Yard. New York City, Department of Small Business Services (the City) is the current property owner of the Site. The Brooklyn Navy Yard Development Corporation (BNYDC) is the not-for-profit corporation that serves as the real estate developer and property manager of the Yard on behalf of the City.

2.1 History and Operations

Gas used for cooking, lighting, heating and commercial purposes was manufactured at the Nassau Works. The Nassau Works was operating by 1873 and ceased operations prior to 1935. The MGP parcel was sold in 1941 to the United States Navy to accommodate ship-building operations at the Brooklyn Navy Yard. National Grid and its predecessors have not had control of the property since 1941. Prior to development as a MGP, the Site was subject to considerable filling and industrial use by the Wallabout Oil Works (refiner of petroleum oil, naphtha, machinery oil, and gasoline) and Brewster & Povie Soap Works on the northern portion of the Site, in the late 1800s. Circa 1918, the United States government built a toluol recovery plant within the footprint of the former MGP. Approximately 0.46 acres was dredged to create the Wallabout Channel Barge Basin, a man-made waterway constructed in 1942, post MGP operations. Maintenance dredging Navy Yard Basin and Wallabout Channel and Barge Basin was completed through at least 1957 during U.S. Navy operations.

2.2 Current Site Description

The Site occupies approximately 3.71 acres of the 13-acre parcel that is owned by the City. The BNYDC operates the Brooklyn Navy Yard industrial complex, which includes the Site. Access to the Brooklyn Navy Yard is limited by locked gates and a guarded entrance. The Site is covered by asphalt pavement and concrete foundations. Remedial investigations were conducted in the Brooklyn Navy Yard, the Con Edison Parcel (Site No.: V00732), and two surface water bodies along the Navy Yard waterfront: the Wallabout Channel and the Navy Yard Basin. Both basins are man-made waterways. There are no groundwater supply wells on the Site or within the surrounding area.



3.0 Remedial Program Overview

The Brooklyn Union Gas Company d/b/a National Grid NY (National Grid) conducted a Remedial Investigation (RI) between October 2004 and February 2005¹ and a Supplemental RI (SRI) between May and August 2014. For more information on the remedial program and process in New York State, interested parties can contact any of the state representatives listed in Appendix C.

3.1 Remedial and Supplemental Remedial Investigation Findings

A RI Report was submitted to and accepted by the NYSDEC in October 2007. National Grid also conducted an SRI to complete the RI.

The Key Findings of the Final Remedial Investigation and Supplemental Remedial Investigation Reports are:

- The investigations delineated the vertical extent of dense non-aqueous phase liquid (DNAPL) beneath the Site, Con Edison Parcel, Wallabout Channel and Navy Yard Basin. The lateral extent of DNAPL was determined with the exception of the western edge of the Wallabout Channel adjacent to Pier K of the BNYDC because NYSDEC agreed during the SRI implementation that it was not necessary to seek access to Pier K. The SRI determined that a portion of the DNAPL spread northward from the Site under the southwestern corner of the Con Edison Parcel. Isolated lenses of tar were encountered starting at the marsh contact with the glacial outwash at approximately 22 feet below grade and within the glacial outwash at approximately 63 feet and 90 feet below grade at the Con Edison Parcel. Vertical migration of tar continued until the glacial silt/clay unit was encountered. The deepest DNAPL impacts were found at the Gardiner's Clay interface, approximately 103 feet below ground surface. DNAPL has also spread to the northwest of the MGP Site beneath the Wallabout Channel, but it is at a depth below the bottom of the channel, near the marsh contact with the glacial deposits (outwash sand and glacial till) starting at 20 feet below the mudline and has not migrated into the channel.
- Elevated concentrations of mercury were present in shallow soils (fill) on the Site and elevated metal concentrations (cadmium, lead, and mercury) and polycyclic aromatic hydrocarbons (PCBs) were also present in fill within the former Wallabout Channel and on the BNYDC

¹ The current consent order governing the Site, Index No.: W2-1090-06-06, became effective on September 29, 2011.

parcel. These impacts are not associated with the MGP operation and are likely associated with fill used in the development of the parcels.

- Petroleum-impacted soils were encountered in the northeastern portion of the Site. These impacts are likely associated with the former Wallabout Oil Works that operated on the parcel prior to development as an MGP and with former releases at the abutting Con Edison facility to the north. Petroleum impacts were encountered at the Brooklyn Navy Yard within fill material used to fill former man-made waterways during the operation of the Navy Yard. Petroleum impacts were encountered within the footprint of the Wallabout Oil Works on the Con Edison Parcel and within the un-remediated, triangle-shaped area at the Con Edison Parcel, downgradient of the former Kent Avenue Generating Station building, Wallabout Oil Works, toluol plant, and MGP structures. Petroleum impacts were also encountered in the Harbor Deposits in the Wallabout Channel adjacent to the Con Edison Parcel and the Navy Yard Basin.
- Potentially mobile (flowable) DNAPL is present in soil on the Site, and areas beyond the footprint of the Site within the BNYDC parcel at depths below the bottom of the Wallabout Channel Barge Basin and the adjacent Navy Yard Basin. The only actual flowable DNAPL, which could potentially be recovered by pumping, was detected at wells MW-2D, and MW-14I. MW-2D is located on the Site, and MW-14I is located in BNYDC parcel on the southwest side of the Wallabout Channel Barge Basin.
- Groundwater flows toward the Wallabout Channel during both high and low tides. Groundwater moving through the DNAPL-impacted soil and non-MGP related petroleum-impacted soils is transporting dissolved-phase benzene, toluene, ethylbenzene, and xylene (BTEX), chlorinated solvents, and light-end polycyclic aromatic hydrocarbons (PAHs) (e.g., naphthalene) towards the Wallabout Channel Barge Basin. However, the groundwater discharge to the Wallabout Barge Basin is likely limited by the Kent Avenue Sewer structures and sheeting surrounding the basin. Dissolved phase contaminants that enter the Wallabout Channel Barge Basin will likely be mitigated by processes of biodegradation, volatilization, and dilution. No site related contamination has been found in surface waters of the Wallabout Channel Barge Basin. In addition, groundwater flow to the southwest within the deep groundwater zone does not discharge to the Navy Yard Basin or the Wallabout Channel Barge Basin. Trace concentrations of dissolved phase BTEX, PAH and total cyanide impacts at the edge of the RI study area indicate that there is not a deep groundwater plume outside of the RI

study area.

- The lateral extent of dissolved phase BTEX and light-end PAHs in the shallow (water table) groundwater zone has not been defined to the north of the Site. The lateral extent of total cyanide concentrations within shallow groundwater zone has not been defined to the southeast of the Site. Groundwater in the deep zone of the Upper Glacial aquifer contains minimal dissolved phase impacts except in areas where DNAPL-impacted soils are present.

An Exposure and Risk Assessment also was conducted. Its Key Findings:

- Current users of the Site and portions of Site No. 224019A and the Wallabout Channel Barge Basin have a limited potential to come into contact with Chemicals of Concern (COCs) in excess of the screening values.
- Con Edison remediated the Kent Avenue Generating Station, eliminating potential exposure pathways to surface and shallow subsurface soils.
- Only BNYDC employees or licensees, possible trespassers, utility workers, and construction workers at the Site may contact COCs in surface soils during routine activities. This can occur only if soil beneath the asphalt pavement and concrete foundations is encountered or disturbed.
- Potential future utility and construction workers may come into contact with COCs at the Site and portions of Site No. 224019A in shallow soils, soil vapor, and groundwater in the course of performing potential utility repairs or potential future construction.
- Any future excavation at the Con Edison Parcel will be managed by Con Edison to address potential exposure pathways for the construction and utility worker to COCs in subsurface soil, groundwater, and soil vapor. Con Edison has prepared and submitted a Site Management Plan (SMP) to NYSDEC to manage the remaining contamination at the Parcel.
- Only utility workers and trespassers may come into contact with COCs in the sediments of the Wallabout Channel Barge Basin if sediments are disturbed. However, this is unlikely since sediments are located at depth. The sediments do not appear to be impacted from the former Site operation. There is no migration pathway from the sources of contaminants at the Site into the channel. Contaminants are migrating beneath the channel atop a less pervious layer. The MGP stopped operation in 1935 at which time the channel did not exist. The Wallabout Channel Barge Basin was subsequently excavated by the Navy in 1942. Any contaminants

would have been removed with the excavated materials from the channel at that time, and the current sediments represent material that has accumulated since the last dredging.

- Potential future construction workers may come into contact with sediment during future construction projects. However, the COCs in sediments are not associated with releases from the former MGP. Impacts to surficial sediments are related to the urban conditions common to NYC waterways. The surficial sediments have accumulated since the last dredging of the Wallabout Channel Barge Basin.
- No current or future users of the Site are anticipated to come into contact with COCs. The Respondents are aware of the health and safety considerations to employees, tenants, and visitors to the property posed by the disturbance of potentially impacted media. Institutional and engineering controls are being and will be implemented to minimize potential exposures for current uses and any future developments.
- A soil vapor intrusion evaluation will be performed if potential future buildings, overlying areas of soil, and groundwater impacts that could potentially generate soil vapors are constructed.

A Fish and Wildlife Resource Impact Analysis (FWRIA) identified chemicals of potential ecological concern (COPECs) within subsurface soils, sediments, and surface waters in the RI Study Area and vicinity and evaluated the potential risks to on-site and off-site terrestrial and aquatic receptors. The COPECs within subsurface soils do not pose an environmental concern to wildlife at the Site, because the frequency and duration of exposure is limited. The FWRIA identified the Site and vicinity as a disturbed urban habitat due to the developed nature of the area and limited presence of vegetation. Exposure to surface soil was not considered a significant complete exposure pathway due to pavement at the Site and the placement of clean fill at the Con Edison Parcel.

COPECs were encountered within surficial sediments of the Wallabout Channel Barge Basin SRI Area and adjacent to the SRI Area within the Navy Yard Basin. However, the Wallabout Channel Barge Basin, portions of the Wallabout Channel, and the Navy Yard Basin were actively dredged between 1957 and 1961 during the operation of the Brooklyn Navy Yard. These sediments are a result of harbor sedimentation, industrial discharges or sediment loading from on-going CSO discharges. Detected concentrations of chemicals in surface sediments post-date the operation of

the MGP and are un-related to releases from the MGP. The COPECs in surficial sediments evaluated during the Part I FWRIA are representative of regional urban conditions.

3.2 Feasibility Study

National Grid developed a Feasibility Study to address impacts at the Site and impacts that have migrated from the Site. The Feasibility Study considers the results of the Remedial Investigation and the Supplemental Remedial Investigation.

3.3 Proposed Remedial Action Plan

NYSDEC, in consultation with NYSDOH, developed a Proposed Remedial Action Plan (PRAP) which describes the proposed remedy to address impacts at the Site and impacts that have migrated from the Site. The proposed remedy is intended to attain the remedial action objectives identified for the Site for the protection of public health and the environment. This PRAP identifies the preferred remedy, summarizes the other alternatives considered, and discusses the reasons for the preferred remedy.

3.4 Record of Decision

NYSDEC issued a Record of Decision (ROD) in September 2020 which presents the remedy for the Site. This decision is based on the Administrative Record of the NYSDEC for the Site and the public's input to the proposed remedy presented by the NYSDEC. In the ROD the selected remedy is referred to as cover system, institutional controls, and coal tar recovery.

3.5 Pre-Design Investigation

National Grid conducted a Pre-Design Investigation in April – May 2022. The objectives of the PDI were to confirm areas of apparent DNAPL saturation (based on visual observation) previously identified in the RI via soil borings and to install wells, screened across the apparent DNAPL saturation zones, to assess the potential recoverability of DNAPL.

Six recovery wells were installed, four on-site (RW-1I, RW-1D, RW-2D and RW-3I) and two off-site (RW-4I and RW-5I). Each recovery well is constructed of 4-inch diameter poly vinyl chloride (PVC) with a 10-foot-long, PVC sump.

Monthly DNAPL gauging is conducted and DNAPL recovery is conducted during the monthly gauging events as required to prevent exceeding the sump capacity prior to the next scheduled DNAPL gauging event.

The PDI report was approved by the DEC on March 6, 2024.

National Grid is preparing a Remedial Action Work Plan (RAWP) as requested by the NYSDEC to install additional wells to the recovery well network. The Work Plan will be submitted in June 2024 and work will take place in late Summer/early Fall 2024.

4.0 CITIZEN PARTICIPATION ACTIVITIES

This section presents the specific citizen participation and outreach activities planned for implementation during the remedial program and to be implemented in accordance with 6 NYCRR Part 375 and DER-23. Operating under project-specific citizen participation goals, clearly defined objectives will be achieved by implementing a range of communication tools and methods. The planned activities are geared toward making project-specific information (*e.g.*, work plans, technical reports, information sheet summaries) available to the public; facilitating communication among stakeholders including the creation of contact lists; scheduling and conducting public meetings; establishing comment periods; and notifying the public of document availability, public meetings, comment periods and major program milestones.

National Grid, the City of New York and the NYSDEC have been updating the community near the Site throughout the early phases of the project. These activities included briefings of local officials and other interested parties and the publication and distribution of Fact Sheets.

The site is located in an Environmental Justice Area. Environmental justice is defined as the fair treatment and meaningful involvement of all people regardless of race, color, national origin, or income with respect to the development, implementation, and enforcement of environmental laws, regulations, and policies. Environmental justice efforts focus on improving the environment in communities, specifically minority and low-income communities, and addressing disproportionate adverse environmental impacts that may exist in those communities.

The site is located in an area with significant Hispanic-American and Yiddish speaking populations nearby. Therefore, all future fact sheets will be translated into Spanish and Yiddish.

4.1 **Goals and Objectives**

The central goal of this CPP is to achieve effective, open communication about the remedial program among stakeholders and interested parties, National Grid and the NYSDEC. Common goals include:

- Communicate program goals and major milestones, actions and outcomes;
- Inform citizens and others of ongoing project activities, status and progress;
- Provide citizens (and all stakeholders) a forum for input and comment; and
- Engender a public understanding of constituents of interest, their potential effects on human health and the environment, and appropriate responses to mitigate those effects.

In order to accomplish these goals, the following specific objectives will be pursued through the implementation of this CPP:

- Consistently communicate goals, accomplishments, and status of the project to the contact list (including community leaders, public officials and the wider community, as necessary) through appropriate means;
- Establish, maintain, update and utilize the contact lists;
- Educate the community, in lay terms, about the nature and magnitude of potential site risks, including instructions for mitigating risk (if appropriate) and assurances that the environment and worker/public health and safety are protected;
- Provide interested parties the opportunity to review and comment on technical reports generated through the remedial program (e.g., public comment periods and document repository as required by 6 NYCRR Part 375);
- Provide interested parties the opportunity to present opinions and ideas during the remedial program (e.g., conduct public meeting/comment period and availability session as required by 6 NYCRR Part 375);
- Provide the news media with interviews of National Grid authorized spokespersons, as available, as well as press releases and similar materials to ensure accurate coverage of remedial program activities;
- Provide a designated project spokesperson as point of contact through which community inquiries regarding the project can be addressed consistently and effectively; and

- Periodically review the effectiveness of the citizen participation and outreach activities during the remedial program and make adjustments in this CPP's methods and/or activities, if necessary.

The community contact list is provided in Appendix C and the former Nassau MGP Site Project management (NYSDEC, NYSDOH and National Grid) contacts are provided in Appendix D.

4.2 Tools and Methods

There are many ways to reach and communicate with the community and other interested parties as this CPP is implemented over the course of the remedial program. A variety of outreach tools and methods will be used to ensure proper communication with the interested parties that include various organizations, public and business leaders, and a diverse assemblage of individuals of all ages, education backgrounds and cultures.

Interested parties will be informed and invited to participate in the planned citizen participation activities through appropriate means such as mailings to the contact list, legal notice in newspapers, press releases, notices posted on the site's website, information sheets and other documents made available in the document repository.

The following specific public participation activities will be implemented as required by 6 NYCRR Part 375 and current NYSDEC guidance (DER-23).

4.2.1 Document Repository

A Local Document Repository has been established at the offices of Brooklyn Community Board 2, which maintain in one file all of the relevant documents related to the Site. A Repository is also maintained at the NYSDEC offices in Albany, New York. Contact information for the Repository:

Brooklyn Community Board 2
350 Jay Street
Brooklyn, New York 11201
Phone: 718.596.5410
<https://www1.nyc.gov/site/brooklynbc2/index.page>

NYSDEC
Division of Environmental Remediation 625 Broadway
Albany, NY 12233-7014
(518) 402-9564
Call for Appointment and Hours

Greenpoint Library online:
www.bklynlibrary.org/locations/greenpoint/remediation

The following documents are available in the Repository, or will be made available when completed and accepted by the NYSDEC:

- Citizen Participation Plan
- Final Remedial Design Work Plan
- Remedial Action Work Plan
- Remedial Design
- Final Engineering Report
- Interim Site Management Plan
- DNAPL Recovery Pre-Design Investigation/Design Report
- Other Materials (e.g., Information Sheets, Notices, etc.).

4.2.2 Meetings and Meeting Fact Sheets

Milestone Public Meetings will be scheduled by the NYSDEC and Fact Sheets announcing such meetings will be distributed to the Site's mailing list. Fact Sheets will be produced and distributed to the Site's contact list by the NYSDEC before the start of Remedial Action (after the acceptance of the Remedial Design Report), and at the issuance of the release and covenant not to sue.

4.2.3 Information Newsletters

Information newsletters will be prepared and distributed to the contact list in order to announce major project milestones and accomplishments throughout the remedial program (*e.g.*, start of construction, major report completion, etc.). Written in lay terms, information newsletters will describe and summarize current and planned work on the Site, particularly any which may impact routine community activities.

4.2.4 Telephone Hotline

National Grid has established a Telephone Hotline for neighbors of the Nassau Gas Works former MGP site. The phone number is (718) 982-7349. There will be occasional news updates about the investigation, and the Hotline can be used at any time to leave questions about the project.

4.2.5 Website

National Grid has established a website for the project at www.nassauworksmgpsite.com. The website includes background information about manufactured gas plants, historical information about the Site, a description of work that has been completed during the remedial program, and contact information, including links to the NYSDEC's MGP website. A Key Documents section contains the major reports completed during the project, and an archive of Fact Sheets and weekly reports.

4.3 Roles and Responsibilities

The specific roles and associated responsibilities for implementing this CPP are:

- NYSDEC Remedial Project Manager - The NYSDEC Project Manager is responsible for enforcement, oversight and management of the overall remedial program. Typical citizen participation-related activities include making presentations at public meetings, reviewing project documents such as information sheets, and providing technical assistance in preparing the responsiveness summary or answering public inquiries.
- NYSDEC Citizen Participation Specialist - The Citizen Participation Specialist assists the project manager in implementing the CPP. Typical activities include preparation and/or review of information sheets and the responsiveness summary and coordination of public meetings and availability sessions.

- National Grid Project Manager - The National Grid Project Manager, in cooperation with the NYSDEC Project Manager, is responsible for implementing the overall remedial program at the site. Typical citizen participation-related activities include management of CPP implementation, presentations at public meetings and technical assistance to the NYSDEC Project Manager and Citizen Participation Specialist.

4.4 Schedule for Implementing Elements of the CPP

Implementing elements of this CPP will depend upon completion by National Grid and final approval by the NYSDEC of various plans and reports required by the Order on Consent governing the Nassau Gas Works former MGP Site.

5.0 SUMMARY

Guided by the goals and objectives of this CPP, implementation of the planned public outreach and citizen participation activities will ensure the timely communication of important program information of interest to the local community. Citizen involvement and interaction in the remedial program will be facilitated through specific opportunities such as public meetings, public comment periods, availability sessions, use of the site's website and the Document Repository. Throughout the remedial program, this CPP and its specific outreach tools and methods will be monitored and, as required and agreed by the NYSDEC and National Grid will be adjusted to improve its effectiveness in responding to community needs.

Appendix A

GLOSSARY OF KEY CITIZEN PARTICIPATION TERMS AND MAJOR PROGRAM ELEMENTS

Citizen Participation Plan (CPP) - A document that describes the project-specific citizen participation and outreach activities that will take place alongside the technical components of the remedial program. The CPP also provides project information, citizen participation goals and objectives, and lists of contact persons and document repositories.

Citizen Participation Specialist - An NYSDEC staff member whose duty it is to provide guidance and assistance in carrying out the CPP. The Citizen Participation Specialist is the key contact for public inquiries about the project and the remedial activities.

Contact List - A list in the CPP (Appendix C) containing names and addresses of individuals, groups, organizations, news media and public representatives interested and/or affected by the project. The contact list is used to distribute important information and notices about the project and the remedial program.

Document Repository - Project documents and other information are placed in the Document Repository to facilitate convenient public access to these materials. Documents are available for public reference and review at the offices of Community Board 2. Refer to Appendix B for more information about the Document Repository location.

Feasibility Study (FS) - Based on information gathered during the Remedial Investigation (RI), the FS is a process for developing, evaluating and selecting appropriate Remedial Action (RAs) for limiting or eliminating the potential human and environmental hazards of a site. The FS sets out the goals of the remedial actions to be taken, evaluates the most appropriate alternatives and selects the best alternative based on several criteria. The selected remedy is then recommended for implementation in the Proposed Remedial Design Plan, which is subject to public review and comment.

Interim Remedial Measure (IRM) - A discrete action which can be conducted at a site relatively quickly to reduce the risk to people's health and the environment from a well-defined waste problem. An IRM can involve cutting and plugging waste conduits, removing contaminated soil and securing a site.

Polycyclic Aromatic Hydrocarbons (PAHs) - Contaminants typically found at MGP sites and associated with coal tar residues.

Remedial Design (RD) - This report will include a detailed description of the remedial objectives and the means by which each essential element of the selected remedial alternative will be implemented to achieve those objectives. It incorporates the findings of the FS Report to provide a remedial design which will be implemented during the performance of the cleanup activities at the site.

Remedial Investigation (RI) - A process to determine the nature and extent of contamination at a site by analyzing data collected from sampling (e.g., water, soil, air, etc.) at a site. Information gathered throughout the RI is then used to conduct a Feasibility Study (FS), which proposes and evaluates various remedial alternatives for the site.

Responsiveness Summary - The Responsiveness Summary is prepared by the NYSDEC to address public comments, questions and concerns regarding the proposed remedial action (PRAP) to be taken at a site. The Responsiveness Summary is issued as part of the Remedial Action Program.

Volatile Aromatic Hydrocarbons - Benzene, Toluene, Ethylbenzene, Xylene (BTEXs) - Volatile aromatic hydrocarbons and are typical contaminants found at MGP sites and other sites where coal, oil, refined products, and other hydrocarbons were burned or used.

Appendix B

IDENTIFICATION OF DOCUMENT REPOSITORY*

Brooklyn Community Board 2

8th Floor

350 Jay Street

Brooklyn, New York 11201

Phone: 718.596.5410

Call for Appointment and Hours <https://www1.nyc.gov/site/brooklyn2/index.page>

NYSDEC

Division of Environmental Remediation 625

Broadway

Albany, NY 12233-7014

Phone: (518) 402-9564

Call for Appointment and Hours

Greenpoint Library online:

<https://www.bklynlibrary.org/locations/greenpoint/remediation>

Documents are also available on the project website:

<http://www.nassauworksmgpsite.com/>

Appendix C

IDENTIFICATION OF AFFECTED AND/OR INTERESTED PARTIES

Site Owner:

NYC Department of Small
Business Services 1 Liberty Plz,
New York, NY 10006
(212) 513-6300

Real Estate Developer and Property Manager on behalf of Site Owner:

Brooklyn Navy Yard Development
Corp. Building 292
63 Flushing Avenue, Unit 300
Brooklyn, New York 11205
(718) 643-9296
<https://www.brooklynnavyyard.org/>

Adjacent Property Owners

Park Plaza Home Owners Association
576 Wythe Avenue
Brooklyn, NY 11249

Site Address**Owner Name, Address**

Jacob's Ladder Playground Clymer Street and Kent Avenue Brooklyn, NY 11211	NYC Dept. of Parks and Recreation The Arsenal Central Park 830 Fifth Avenue New York, NY 10065 (212) 639-9675
--	--

Roberto Clemente Ballfield Rush Street and Kent Avenue Brooklyn, NY 11211	NYC Dept. of Parks and Recreation The Arsenal Central Park 830 Fifth Avenue New York, NY 10065 (212) 639-9675
2 Division Avenue Brooklyn, NY 11211 Block/Lot: 2023-0010	Con Edison 4 Irving Place New York, NY 10003 (800) 752-6633

Government and Elected Officials**Contact Information**

Mayor	Hon. Eric Adams City Hall, New York City https://www.nyc.gov/office-of-the-mayor/contact-the-mayor.page
Brooklyn Borough President	Hon. Antonio Reynoso Brooklyn Borough Hall 209 Joralemon Street Brooklyn, NY 11201 https://www.brooklyn-usa.org/
City Council Member	Hon. Lincoln Ressler 410 Atlantic Ave. Brooklyn, NY 11217 (718) 875-8200 https://council.nyc.gov/district-33/
State Assemblymember	Hon. Jo Simon 341 Smith Street Brooklyn, NY 11231 (718) 246-4889 https://assembly.state.ny.us/mem/Jo-Anne-Simon
State Senator	Hon. Julia Salazar 212 Evergreen Avenue Brooklyn, NY 11211 (718) 573-1726 https://www.nysenate.gov/senators/julia-salazar
Congresswoman	Hon. Nydia Velazquez 266 Broadway, Suite 201 Brooklyn, NY 11211 (718) 599-3658 https://velazquez.house.gov
US Senator	Hon. Kristen Gillibrand 780 Third Avenue, Ste 2601 New York, NY 10017 (212) 688-6262 https://www.gillibrand.senate.gov/
US Senator	Hon. Chuck Schumer 780 Third Avenue, Ste 2301 New York, NY 10017 (212) 486-4430 https://www.schumer.senate.gov/

For additional information on elected representation, please go to <https://www.mygovnyc.org/>

Use the address: 557 Kent Avenue, Brooklyn, NY 11249.

Community Newspapers

<u>Newspaper Name</u>	<u>Editor's Name</u>	<u>Address, Phone #, E-mail</u>
Brooklyn Papers	Gersh Kuntzman	(718) 834-9350 gersh.kuntzman@verizon.net
Brooklyn Eagle	Henrik Krogius	(718) 858-7474 kgrogius@brooklyneagle.net
Der Yid		191 Rodney Street (718) 797-3900 news@deryid.org
New York Daily News		4 New York Plaza New York, NY 10004 https://www.nydailynews.com/
New York Post		1211 Avenue of the Americas New York, NY 10036 https://nypost.com/
Courier-Life Publications https://www.schnepsmedia.com/courier-life-brooklyn-paper/		1 Metrotech Center #10T Brooklyn, NY 11201 Hoy Nueva York 15 Metrotech Center Floor 7 Brooklyn, NY 11201 El Diario La Prensa 15 Metrotech Center Floor 7 Brooklyn, NY 11201

Local Schools and Daycare Centers

Williamsburg CCC
110 Taylor Street
Brooklyn, NY 11249

Episcopal Social Services of New York, Inc.
110 Taylor St
Brooklyn, NY 11249

P.S. 16 Leonard Dunkly
Attn: Principal
157 Wilson Street
Brooklyn, NY 11211

Jesoda Hatorah
505 Bedford Ave
Brooklyn, NY 11211

Uncommon Schools Williamsburg Collegiate Charter School
157 Wilson St #7706
Brooklyn, NY 11211

Bais Yaakov Dkhal Adas Yereim
563 Bedford Ave
Brooklyn, NY 11211

Community, Civic, Religious and Other Environmental Organizations:

88th NYPD Precinct Council
Delia Hunley-Adossa – President
298 Classon Avenue
Brooklyn, NY 11205

FDNY
Engine 211 Ladder 119
26 Hooper Street
Brooklyn, NY 11211

Taylor Wythe Community Center
80 Clymer St
Brooklyn, NY 11249

Taylor Wythe Houses Management Development Office
632 Wythe Place
Brooklyn, NY 11249

Taylor Wythe Houses
President – Resident Association
632 Wythe Place
Brooklyn, NY 11249

North Brooklyn Parks Alliance
Bushwick Inlet Park
86 Kent Avenue
Brooklyn, NY 11249
(718) 599-2718
<https://nbkparcs.org/>

Appendix D

IDENTIFICATION OF PROJECT MANAGEMENT CONTACTS

New York State Department of Environmental Conservation

NYSDEC Project Manager

Greta White, P.G.

625 Broadway

Albany, NY 12207

(518) 402-2029

greta.white@dec.ny.gov

NYSDEC Public Participation Specialist

Thomas V. Panzone

Office of Communications Services

47-40 21st Street

Long Island City, NY 11101

(718) 482-4953

Thomas.panzone@dec.ny.gov

New York State Department of Health

Stephanie Selmer

Empire State Plaza

Corning Tower Room 1787

Albany, NY 12237

(518) 402-7864

beei@health.ny.gov

National Grid Public Representative

April Dubison

SIR Community Affairs, National Grid

2 Hanson Place, 11th Flr

Brooklyn, NY 11217

Nassau Works MGP Project Hotline Telephone – (718) 982-7349

Please leave a message on the Hotline and your call will be promptly returned.